



"PRESSURE INSTRUMENTATION  
FOR THE TOUGHEST APPLICATIONS"



# AMPLIFIED, ABSOLUTE PRESSURE TRANSDUCER



The **212-75-080** offers pressure ranges from **0-100** to **0-5,000 PSIA**, 0-5VDC output, operates at temperatures from **-25°F** to **250°F** (-28°C to 121°C) and provides high level output signal amplification and features input/output isolation, thermal sensitivity accuracy to  $\pm 0.01\%$  of full scale output and available in a wide range of pressure and temperature ranges to meet your specific aerospace and/or military applications.

With all welded, hermetically sealed construction the **212-75-080** is well suited for the toughest mission critical, long term applications.



**212-75-080-XX**  
0-100 to 0-5,000 PSIA

### Specifications:

**Typical Performance:** The following parameters are established from production units.

**Calibration Data:** Calibration Certificates are supplied with each unit.

### Performance: \*

#### Thermal Zero Shift:

$\pm 0.01\%$  of Full Scale Output (F.S.O.) maximum per °F for F.S. pressure > 200PSI.

$\pm 0.02\%$  of F.S.O. maximum per °F for F.S. pressure  $\leq$  200PSI.

**Thermal Sensitivity Shift:** 0.01% of F.S.O. per °F maximum.

**Static Error Band:**  $\pm 0.50\%$  F.S.O. (Best Straight Line Method).

**Repeatability:** Within  $\pm 0.25\%$  F.S.O. maximum.

**Output at Zero Pressure:**  $0.1 \pm 0.1$  VDC

**Output at Rated Pressure:**  $5.1 \pm 0.1$  VDC

**Operating Temperature Range:** -65°F to +250°F (-53°C to +121°C)

**Compensated Temperature Range:** -25°F to +250°F  
(+31°C to +121°C)

### Mechanical: \*

**Pressure Range:** 0-100 to 0-5,000 PSIA.

**Proof Pressure:** 150% of rated range.

**Burst Pressure:** 200% of rated range.

**Pressure Media:** Any compatible with 15-5 PH CRES.

**Electrical Connections:** 4 pin bayonet connector. Mates with MS3116-8-4S.

**Pressure Port:** Per AS4395E04.

**Weight:** 2.6 ounces maximum (0.07 kg)

**Recommended Installation Torque:** 65 in-lb.

### Electrical: \*

**Excitation:** 9-36 VDC maximum.

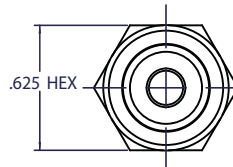
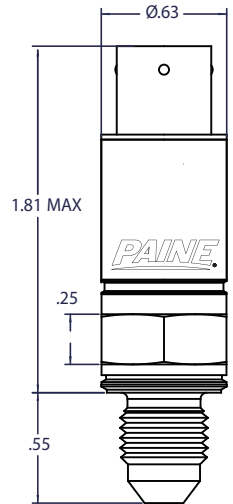
**Input Current:** 15 mA maximum.

**Input/Output Isolation:** 100M $\Omega$  minimum at 50 VDC.

**Insulation Resistance:** All conductors to case, 100M $\Omega$  minimum at 50 VDC.

**Electrical Connections:** A= + Input, B= + Output, C= Output Return, D= Input Return

$\geq 500$  PSI

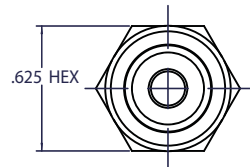
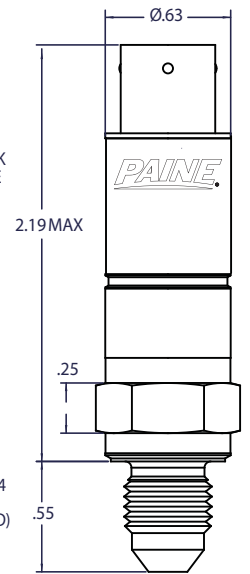


< 500 PSI

FOUR (4) PIN BAYONET LOCK  
ELECTRICAL RECEPTACLE

Actual Size

FITTING END PER AS4395E04  
EXCEPT INNER DIAMETER -  
(0.4375 x 20UNJF-3A THREAD)



Paine Electronics, LLC is a  
ISO-9001:2000/AS9100  
Registered Company

Datasheet P/N: 212-75-080-DS\_REV-C

\* Contact us or your authorized Paine Electronics representative for other standard and/or custom configurations or options.  
\*\* Information is referenced to a 2nd order polynomial.  
All specifications are subject to change or modification without notice.  
PAINE ® is a registered trademark of Paine Electronics, LLC.  
Copyright © Paine Electronics, LLC | All Rights Reserved

Call or email us today for more information!

**509-881-2100**

moreinfo@paineelectronics.com

**Paine Electronics, LLC**  
5545 Nelpar Drive, East Wenatchee WA 98802  
Tel: (509) 881-2100 | Fax: (509) 881-2115

Visit us on the web at:  
[www.paineelectronics.com](http://www.paineelectronics.com)