

CANBUS, DIGITAL PRESSURE TRANSDUCER SERIES

Paine's high resolution digital transducer is ready for **Controller Area Network (CAN) Bus** systems enabling device communication in the toughest environments, found in space exploration, sub-sea, industrial, automation, military and automotive applications.

The **220-38 Digital Series** transducers are designed to accommodate customer-specific applications, offering a wide range of pressures, supply voltages, electrical terminations, provides temperature in Celsius or Fahrenheit and provides a static accuracy of <0.075% of full scale.

The **220-38 Digital Series** transducers feature all-welded, hermetically sealed construction, linearity and temperature correction, self test, state of health status, outputs in PSI, Bar, Pascal or other pressure units upon request.

Featuring a **CANBus** serial communications interface, the **220-38 Digital Series** uses the standard **CANopen** protocol. Multiple transducers can be used on a single bus reducing user cabling, implementation and installation costs.



220-38-010-XX
0-15,000 PSIS

STANDARD & CUSTOM OPTIONS AVAILABLE

- ◆ Optimum Accuracy
- ◆ Current Outputs
- ◆ Electrical Terminations
- ◆ Pressure Ports
- ◆ Special Testing
- ◆ Material Options
- ◆ Thermal Vacuum
- ◆ Vibration Testing
- ◆ Environmental Testing
- ◆ More...



"PRESSURE INSTRUMENTATION, FOR THE TOUGHEST APPLICATIONS"

The leader in precision pressure measurement technology since 1951, Paine Electronics provides high quality, reliable custom pressure instrumentation to a world of Aerospace & Defense applications. Paine utilize's proven, proprietary technology providing flawless operation in the toughest Aerospace & Defense applications. Applications that would typically destroy most sensitive instruments.

Paine provides standard as well as custom pressure instrumentation. Our state-of-the art facility allows us the ability to provide custom solutions even in small quantities, giving our customers the highest level of design flexibility, service and responsiveness. Whatever your special requirements, unique outputs, electrical, pressure, fittings, media or environments - **Paine is ready to help with your next custom device!**



Call or email us today for more information!

509-881-2100
moreinfo@paineelectronics.com

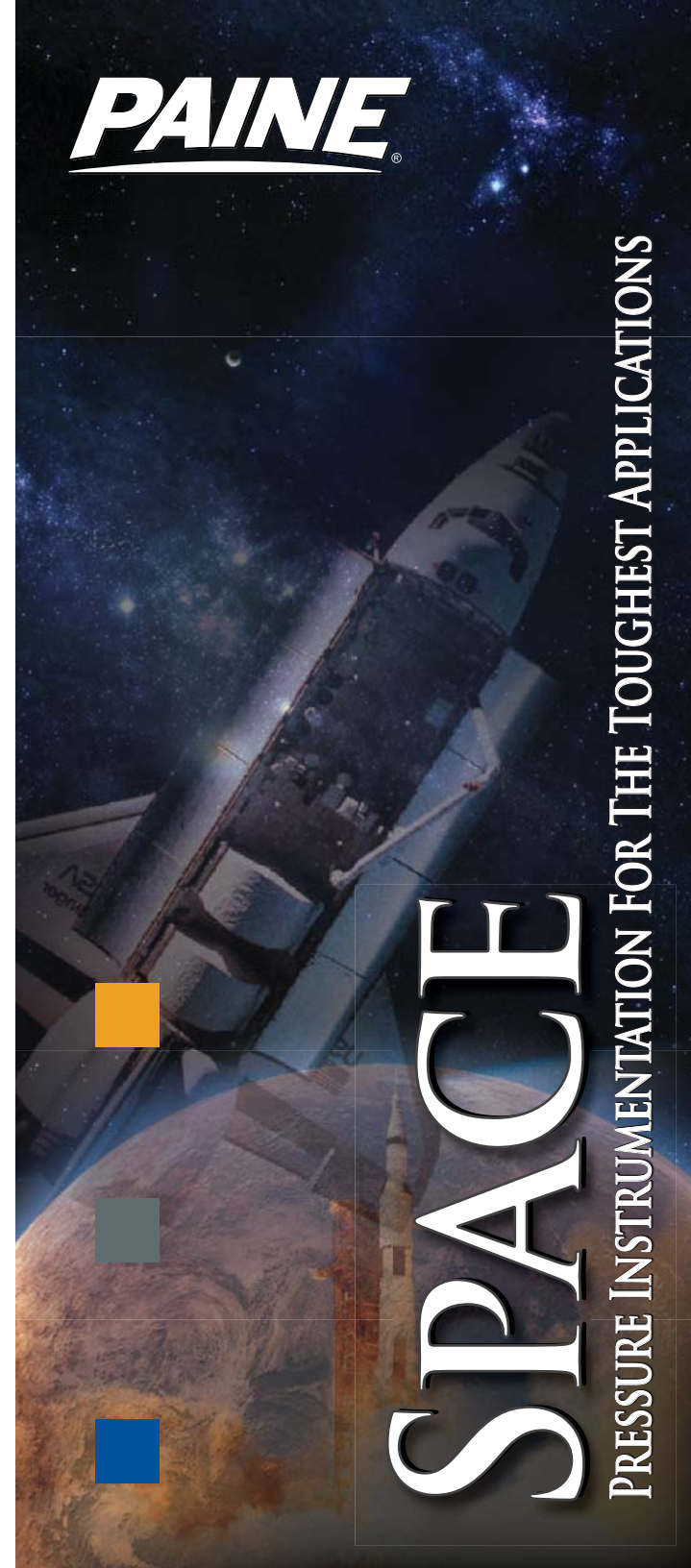
Paine Electronics, LLC
5545 Nelpar Drive, East Wenatchee WA 98802
Tel: (509) 881-2100 | Fax: (509) 881-2115

Visit us on the web at:
www.paineelectronics.com

All specifications are subject to change or modification without notice.
PAINE ® is a registered trademark of Paine Electronics, LLC.
Copyright © Paine Electronics, LLC
All Rights Reserved
Publication: Space2009-C



Paine Electronics, LLC is a
ISO- 9001:2000/AS9100
Registered Company



PRESSURE INSTRUMENTATION FOR THE TOUGHEST APPLICATIONS

TRANSMITTER, ABSOLUTE, 4-20MA, 500V PROTECTION

The **214-35-520** two-wire, 4-20 mA output transmitters offer excellent measurement properties and long service life with line transient protection up to 500V and supports pressure ranges from **0-1,000** to **0-20,000 PSIA**.

The **214-35-520** is well suited for remote extreme/potentially explosive environments and operates at temperatures from **-65°F to 230°F** (-53°C to 110°C). With it's all-welded, stainless steel construction for high reliability in the toughest environments, it can be manufactured to comply with specific and critical pressure monitoring demands and is available with optional features including specific pressure ranges, voltage inputs, electrical connections, pressure ports and special testing.

214-35-520-XX

0-1,000 to 0-20,000 PSIA

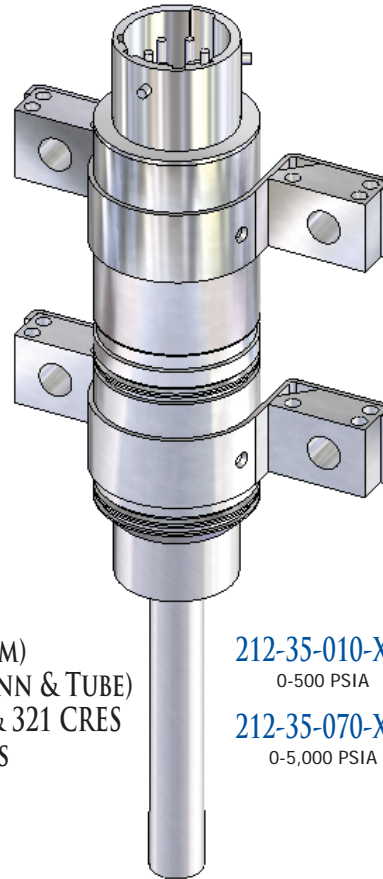


S-CLASS, SATELLITE, AMPLIFIED PRESSURE TRANSDUCER

This compact, **low mass**, high-level amplified 0-5VDC output pressure transducer features built-in **Class 'S', QML-V / ELDRS free** electronics utilizing MIL-PRF-38535 components with pressure ranges from **0-500** to **0-5,000 PSIS** and is designed to tolerate high levels of shock and vibration without damage.

The **212-35** is radiation hardened to 100 Krad (Si) Total Dose that is immune to Single Event Latchup (SEL).

With customizable external features such as connector types, pressure port configurations and mounting methods, these transducers are well suited for remote applications that require accuracy, stability and long term performance in a small, less than **2.47"** (62.73mm) length.



DIAMETER: .79 (20MM)
LENGTH: 2.47 (< CONN & TUBE)
MEDIA: 15-5 CRES & 321 CRES
WEIGHT: 115 GRAMS

212-35-010-XX
0-500 PSIA

212-35-070-XX
0-5,000 PSIA

SPACE QUALIFIED, ABSOLUTE AMPLIFIED TRANSDUCERS

The **213 Space Series** are a rugged 0-5VDC output, **space qualified absolute pressure amplified** transducer that offers pressure ranges from **0-100** to **0-10,000 PSIA**, operates at temperatures from **-20°F to +158°F** (-29°C to +70°C) and has nearly two decades of mission critical flight heritage.

From fuel pressure monitoring systems on satellites and space probes to servo-valves and actuators on space vehicles, the **213 Series** is designed and tested to operate at high levels of shock and vibration without damage.



213-36-740-XX
Low Pressure Series

213-76-860-XX
High Pressure Series

DECADES OF MISSION CRITICAL FLIGHT HERITAGE!

Paine Electronics is proud to be a part of many heritage projects. Here are just a few we have supported:

- ◆ Voyager 1 & 2
- ◆ NEAR
- ◆ Telstar
- ◆ MTSAT
- ◆ Intelsat V, VI & VII
- ◆ Panamsat
- ◆ Mariner, Jupiter & Saturn
- ◆ Messenger
- ◆ Globalstar
- ◆ MUSES-C
- ◆ ASTRO-F



Call or email us today for more information!
509-881-2100
moreinfo@paineelectronics.com

